



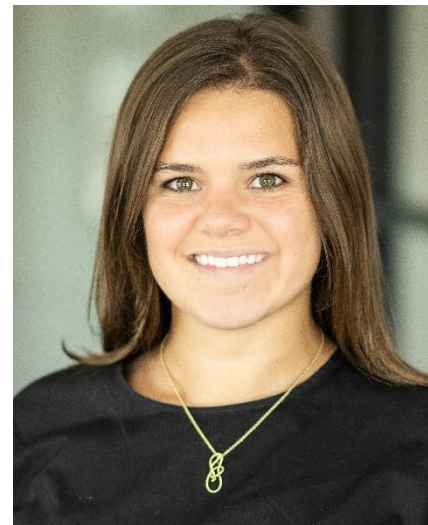
*For Immediate Release*

**PATTERSON REAL ESTATE ADVISORY GROUP WELCOMES NEW TEAM MEMBER  
GRACE LEWIS**

**Atlanta: July 12, 2022** - Patterson Real Estate Advisory Group ("Patterson") is pleased to announce and welcome Atlanta-based team member Grace Lewis.

Grace joins Patterson as an Analyst. In this role, she will work with deal teams on investment underwriting, model preparation, and the production of investment offerings. She is a graduate of the University of Virginia where she earned a Bachelor of Arts in Economics.

Grace is originally from Columbus, Georgia. Prior to joining the firm as a full-time Analyst, she was an intern for Patterson assisting the transaction team in the execution of debt and equity assignments. "What makes Patterson so special is the unprecedented rate at which young professionals can gain knowledge. As an intern, I was given the opportunity to touch deals at all stages in the process, and therefore receive a well-rounded education of the industry. I am thrilled to join Patterson's team and improve my commercial real estate knowledge," commented Grace.



*Grace Lewis  
Analyst*

"We are thrilled to welcome Grace as the newest member of our growing team. The addition of this bright and capable employee further strengthens our ability to serve clients," said CEO, Lance Patterson.

## **About Patterson**

Patterson Real Estate Advisory Group is a capital placement and real estate finance advisory firm that represents owners, developers and investors seeking capital to leverage commercial real estate opportunities. Patterson arranges construction, bridge, mezzanine, and permanent financing while also coordinating equity and joint venture formations along with general finance advisory work. The primary focus is helping clients across different property types access investors at a variety of different levels of the capital stack, matching the specific need with the appropriate capital provider.

For more information, please contact Suzanne Holman at 404-504-6682 / [sholman@pattersonreag.com](mailto:sholman@pattersonreag.com) or go to [www.pattersonreag.com](http://www.pattersonreag.com) for more details on Patterson.