



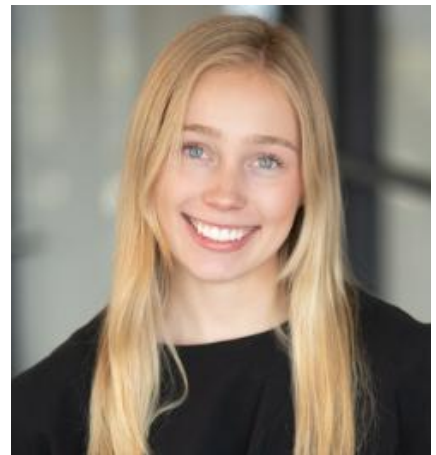
For Immediate Release

**PATTERSON REAL ESTATE ADVISORY GROUP WELCOMES NEW TEAM MEMBER
CAROLINE LYLES**

Atlanta: April 2026 - Patterson Real Estate Advisory Group ("Patterson") is pleased to announce and welcome Atlanta-based team member Caroline Lyles.

Caroline joins Patterson as an Analyst. In this role, she will work with deal teams on investment underwriting, model preparation, and the production of investment offerings. She is a graduate of the University of Georgia where she earned a Bachelor of Business Administration in Finance.

Caroline is originally from Atlanta, Georgia and prior to joining Patterson, she was an analyst in Truist Securities' Healthcare Investment Banking group. In this role, she supported the sale of healthcare service companies through financial modeling, preparation of marketing materials, and coordination of due diligence. She worked closely with management teams, external advisors, and senior bankers throughout transaction processes. Prior to joining Truist full-time, Caroline completed internships at Truist and T5 Data Centers.



*Caroline Lyles
Analyst*

"We are thrilled to have Caroline join us and look forward to watching her grow here at Patterson. She comes with a strong professional foundation and will be a meaningful addition to our team." said Laura Friddell, Patterson Managing Director.

About Patterson

Patterson Real Estate Advisory Group is a capital placement and real estate finance advisory firm that represents owners, developers and investors seeking capital to leverage commercial real estate opportunities. Patterson arranges construction, bridge, mezzanine, and permanent financing while also coordinating equity and joint venture formations along with general finance advisory work. The primary focus is helping clients across different property types access investors at a variety of different levels of the capital stack, matching the specific need with the appropriate capital provider. Patterson has office locations in Atlanta, Charleston, Charlotte, Dallas, Nashville, and Tampa.

For more information, please contact Suzanne Holman at 404-504-6682 / sholman@pattersonreag.com or go to www.pattersonreag.com for more details on Patterson.